

The 21st Century Research Library: Challenges become Opportunities

John Culshaw

Candidate for Vice Provost for University Libraries and
University Librarian

University of Wisconsin-Madison



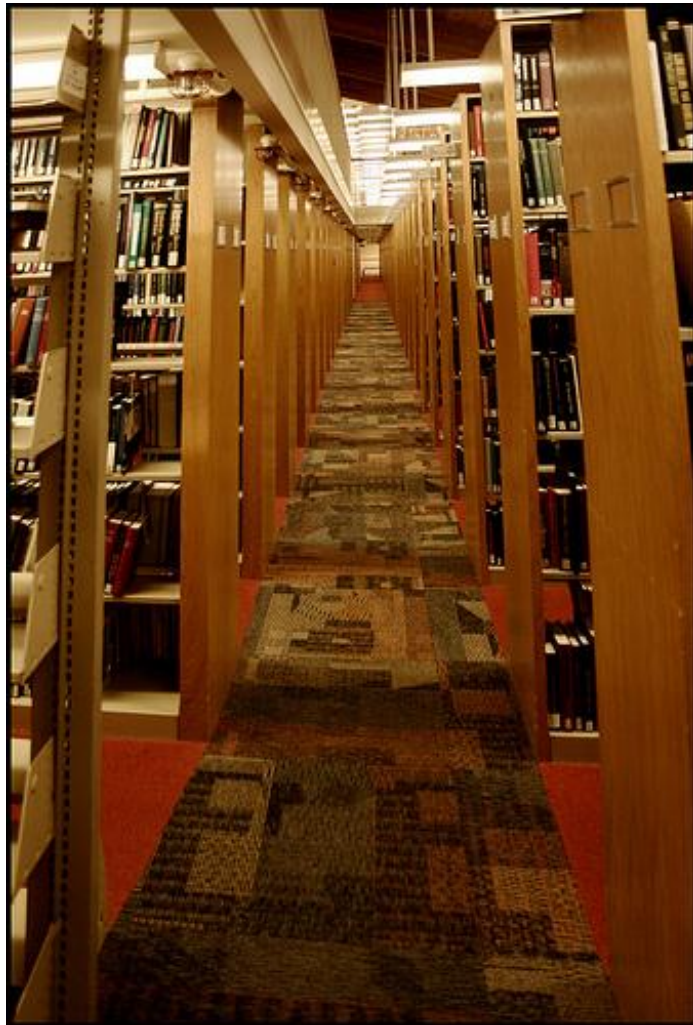
What is your vision for a 21st century research library, especially with regards to active innovation? What types of new activities do you see university libraries developing in the coming decade to support faculty research, scholarly communication, and teaching? Given budget constraints, how can we implement this?

- Vision for the 21st Century Research Library
- New activities
- Funding challenges

Vision for the 21st Century Research Library

- Heart of the campus
 - robust collections
 - vibrant spaces
- Flexible, future-oriented organization
 - embraces change
 - encourages and supports innovation
- User-centered services

Heart of the Campus: Robust Collections



Home | Location & Directions | Hours | Staff | Contact Us

Take me to: Library Catalog

Exhibits

[Current](#) | [Past](#) | [Future](#) | [Online Exhibits](#) | [E-Facsimiles](#) | [Elsewhere](#)

Past Exhibits

2012: Expanding the Home Circle: Big Books in Special Collections

2011: Jesuits & the Construction of Knowledge; Reflections of Anglo-Saxon England; Peter Pauper Press

2010: Decorative Trade Bindings; Looking Up; All Hands; By Design (16th-Century Books)

2009: Science Circa 1859; Darwin, Wallace, & Huxley; Dogs in Special Collections; Holdings about Lapland; Religion in Print

2008: Art of College Humor; Imperial Albums; Color Enhanced; WorkBooks

2007: Stormy Weather; Under Medicean Stars; Making Maps; American Women Writers

2006: Pseudo-Science; Meggendorffer and Movable Books

2005: Italian History; Birds in Books; Paragraphs on Typography

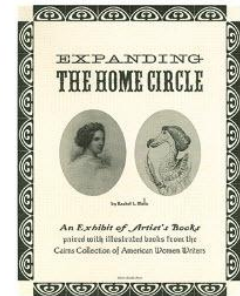
2004: Frankenstein; Chivalry; Layers of Knowledge; Carl Rakos

Exhibits in 2012

Expanding the Home Circle:
An exhibit of artists books paired with illustrated books from the [Cairns Collection](#) of American Women Writers

Exhibit dates: June 18 – September 14, 2012

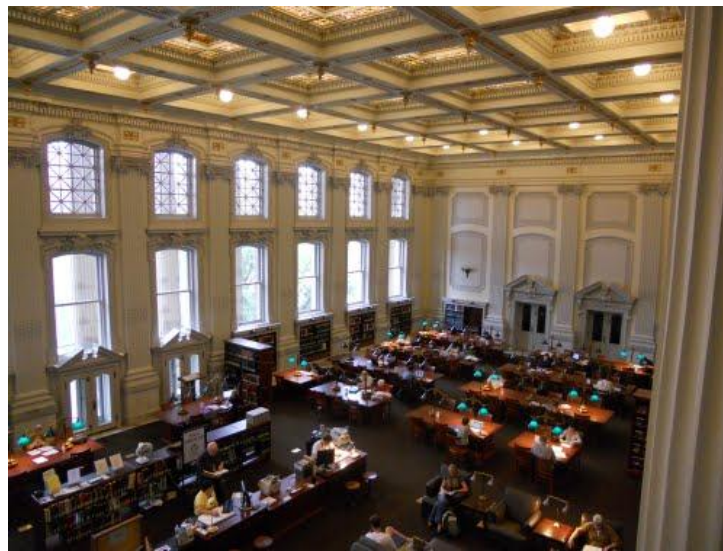
Created and curated by Art Department alumna Rachel Melis. Since spending the summer of 2007 as a [Friends of the UW-Madison Libraries Grant-in-Aid](#) scholar, Ms. Melis has been engraving and letterpress-printing contemporary versions of texts by 19th-century women authors — focusing on those who sought to expand the domestic sphere in response to what they witnessed on the American frontier. This exhibit paired 19th-century illustrations and caricatures of women and nature with Melis' surreal combinations of women and birds.



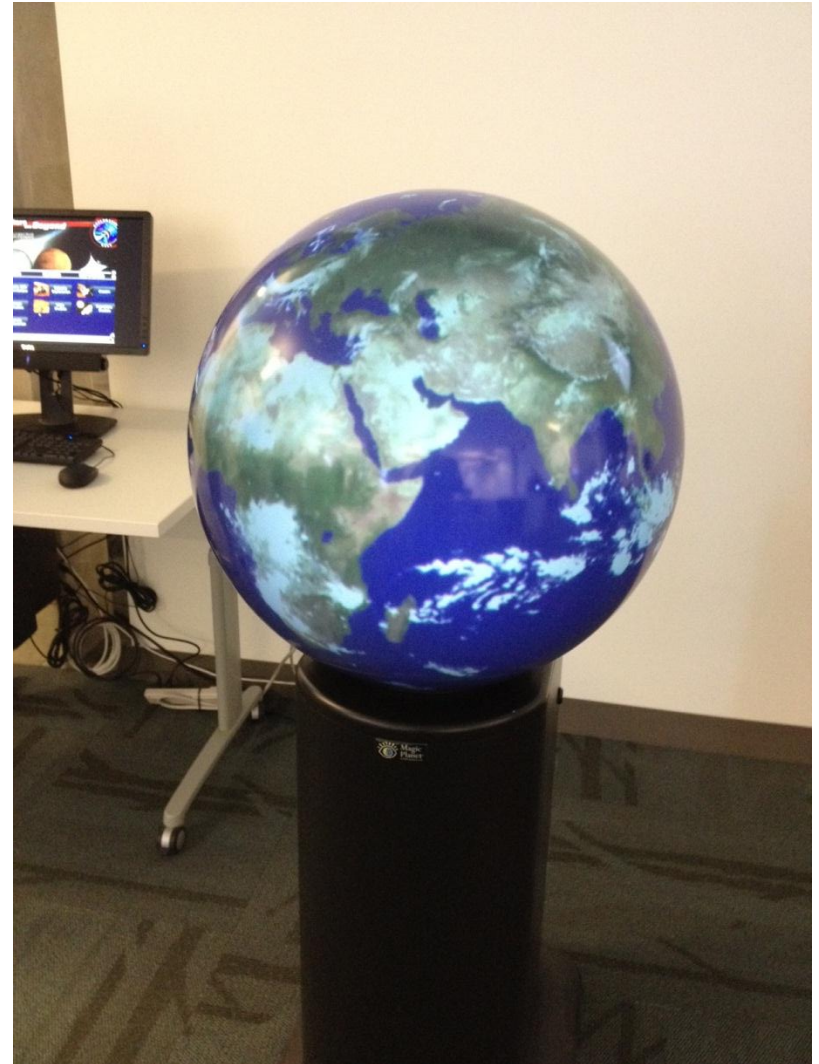
The exhibit drew upon authors well represented in the Cairns Collection, including Lydia Maria Child, Abby Morton Diaz, Eliza Farnham, Margaret Fuller, Caroline Kirkland, Harriet Beecher Stowe, and Frances Elizabeth Willard (as shown here, learning to ride a bicycle), among many others. Exhibit cases also explore such themes as women's worth and work, heading West, poetry, and matters of freedom and of prejudice.

Visitors to Special Collections have the opportunity to examine a copy of Melis' new book, *Unsexed & Unsphered, Volume 1: A Chapter from A New Home—Who'll Follow*

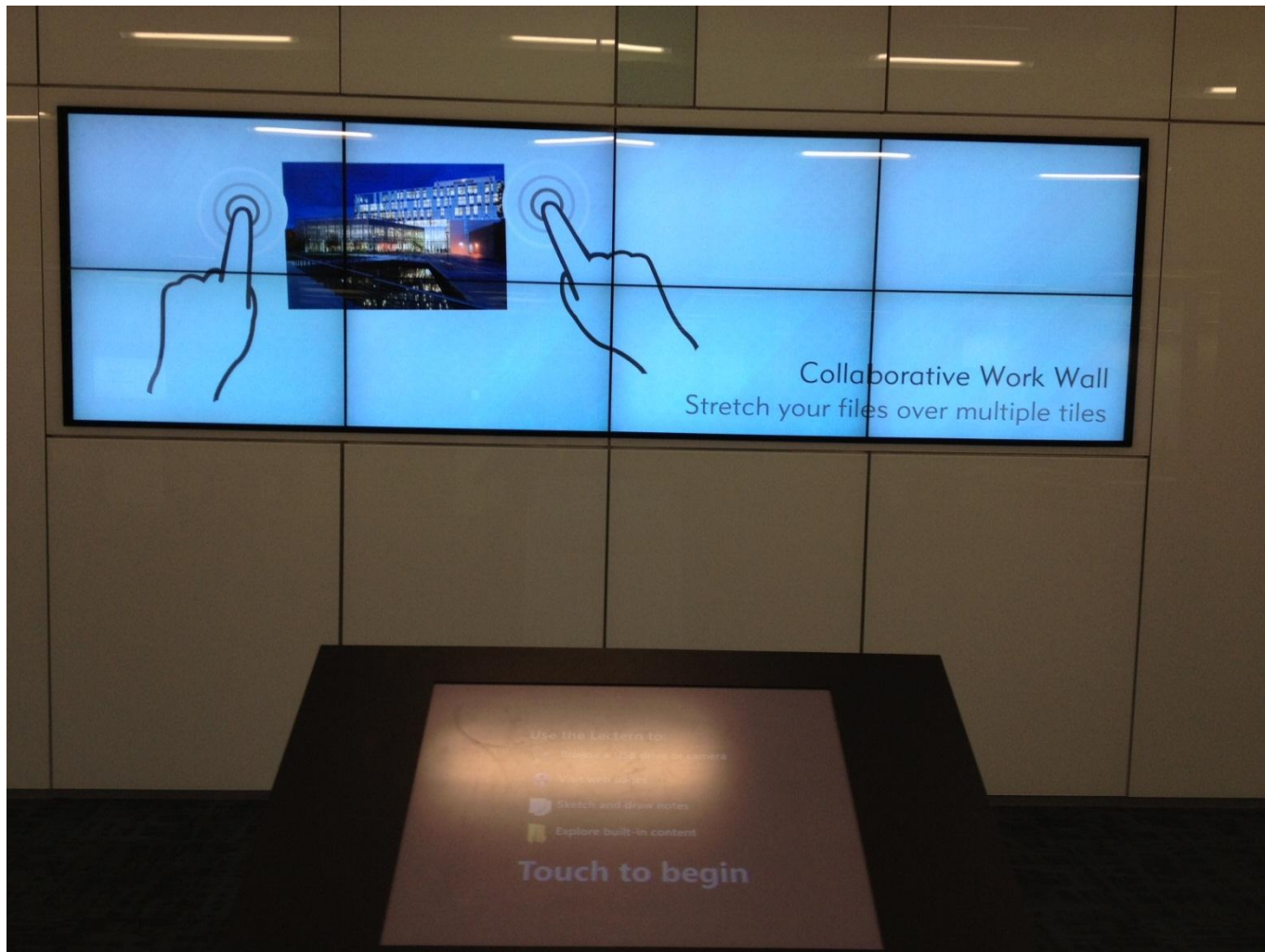
Heart of the Campus: Vibrant Spaces



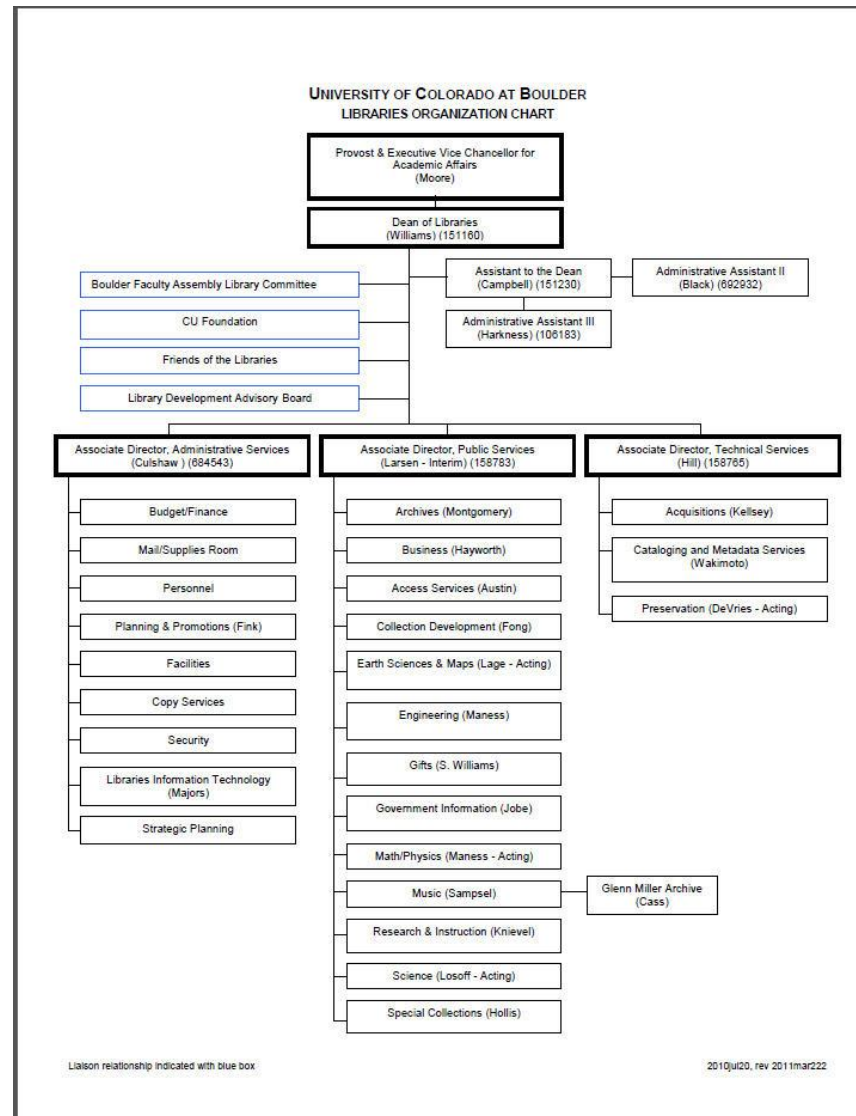
Heart of the Campus: Vibrant Spaces



Heart of the Campus: Vibrant Spaces

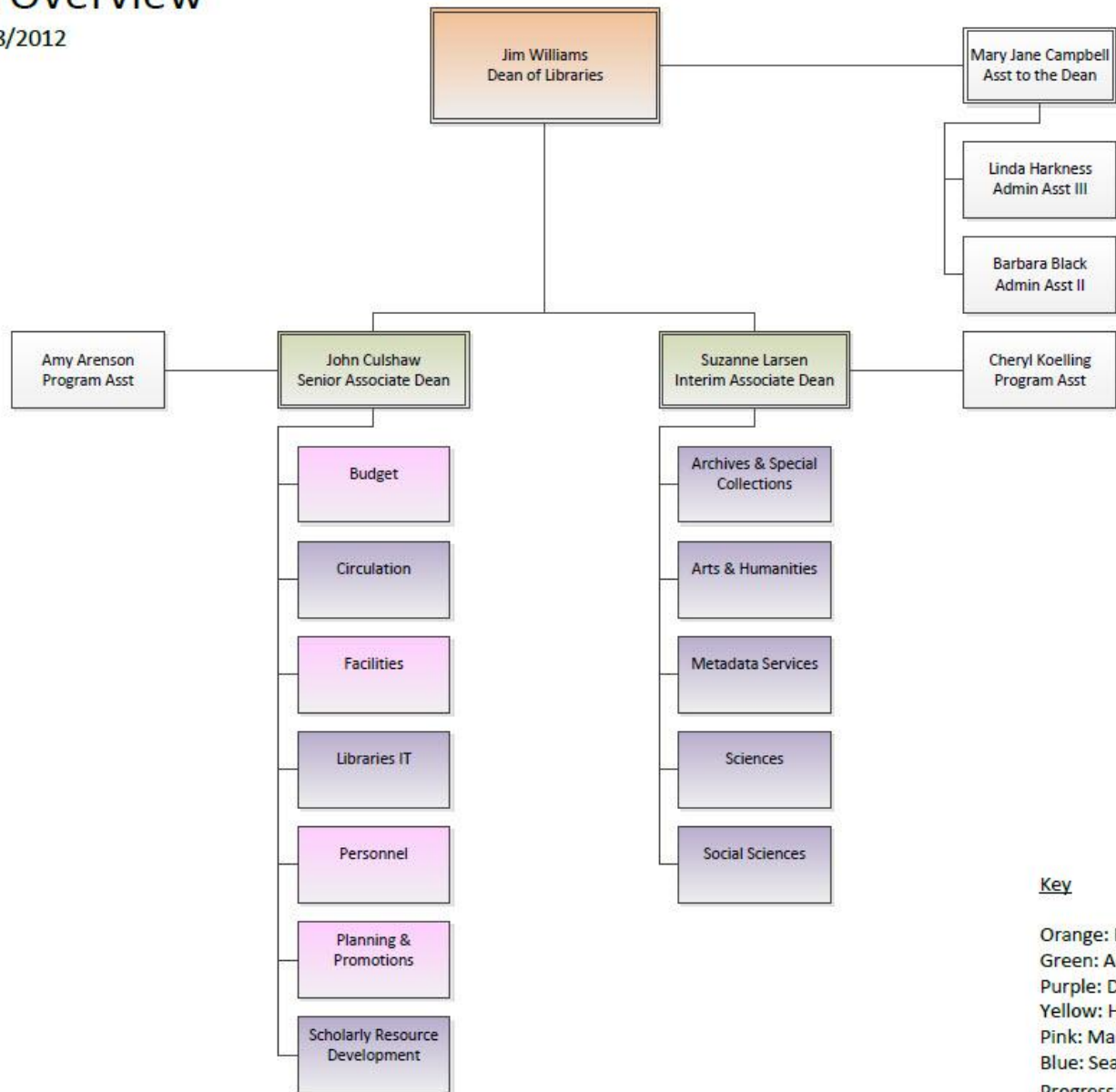


Flexible, future-oriented organization



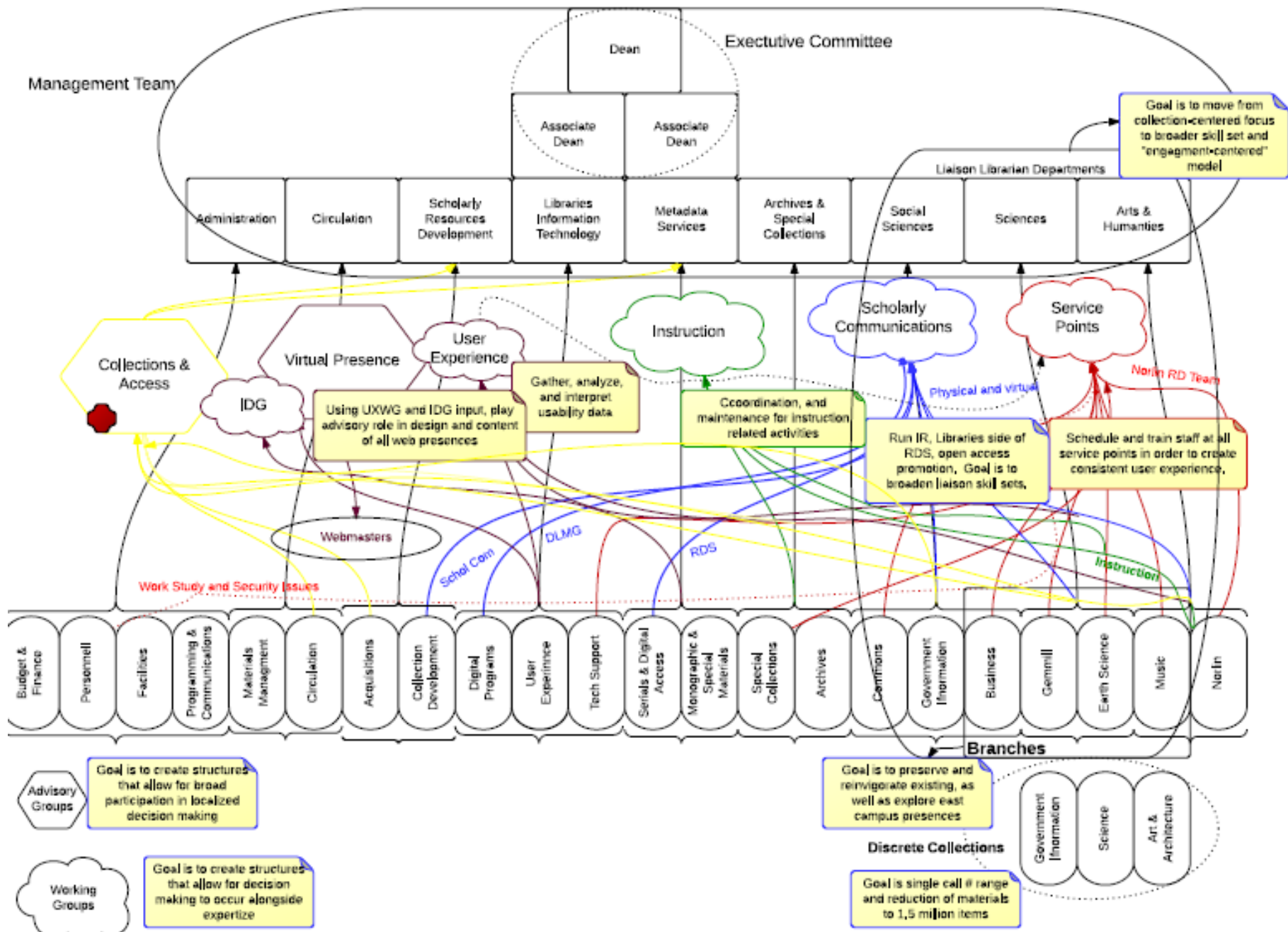
Libraries Overview

6/18/2012



Key

Orange: Dean of Libraries
Green: Associate Dean
Purple: Director
Yellow: Head
Pink: Manager
Blue: Search Approved/In Progress



User-centered Services

General Libraries System Vision

- We are vital to the teaching, learning, research, and outreach mission of our great University.

For Wisconsin and the World

The University of Wisconsin-Madison will be a model public university in the 21st Century, serving as a resource to the public and working to enhance the quality of life in the state, the nation, and the world.

Strategic Priorities

- Provide an exemplary undergraduate education
- Reinvigorate the Wisconsin Idea and renew our commitment to our public mission
- Invest in scholarly domains in which we have existing or potential strength and impact
- Recruit and retain the best faculty and staff, and reward merit
- Enhance diversity in order to ensure excellence in education and research
- Be responsible stewards of our resources

Provide an exemplary undergraduate education

- Information literacy instruction
- Curriculum redesign
- “Personal librarian”

Google Project Glass



Reinvigorate the Wisconsin Idea and renew our commitment to our public mission

“Radium was an instant commercial hit. Yet the Curies chose not to patent their findings. MARIE: ‘If our discovery has a commercial future, this is an accident.’ PIERRE: ‘It would be contrary to the scientific spirit.’”

-- Radioactive, Lauren Redniss, p.61

Invest in scholarly domains in which we have existing or potential strength and impact

- Research Data
- Special Collections
- Centers of Excellence
 - Mellon grant
 - Elementa
- Government Publications

Recruit and retain the best faculty and staff, and reward merit

- Partnerships with SLIS
- Staff development

Enhance diversity in order to ensure
excellence in education and research

Be responsible stewards of our resources

- Consortial arrangements
- Preservation

Funding Challenges

“My head is so full of plans that it seems aflame.”

-- Marie Curie, cited in *Radioactive*, p.21.

Funding Challenges

- Reallocation of resources
- Strategically fill positions
- Fundraising

The Wisconsin Idea

“The beneficent influence of the university reaches every home in the state...”

--President Charles Van Hise, 1904

The Wisconsin Idea



Q&A